

MONTHLY MEMBERSHIP PROGRESS REPORT

LOCATION CALIFORNIA

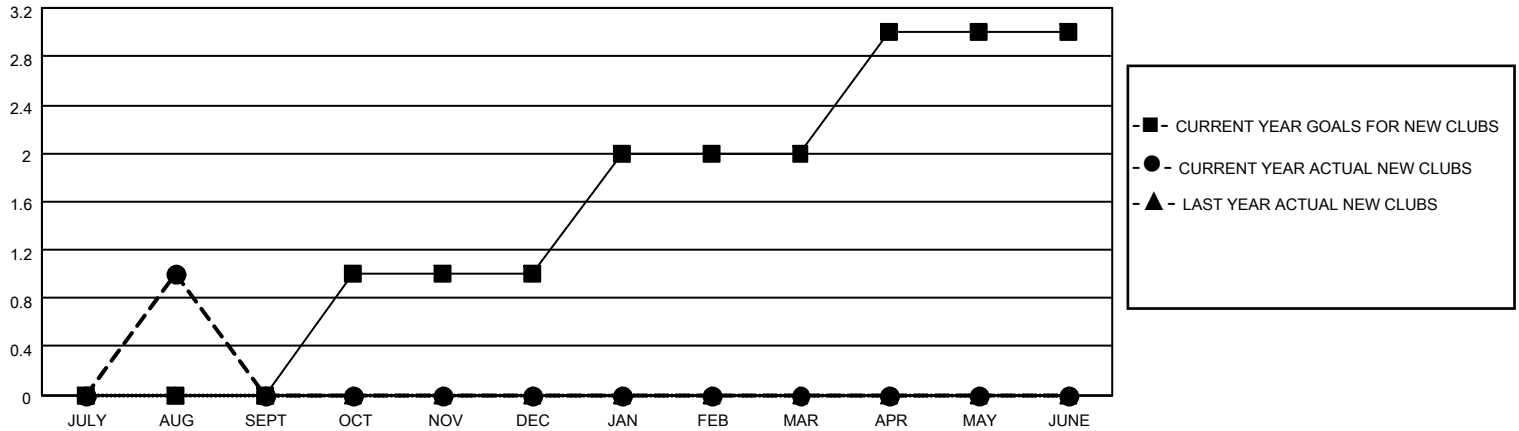
District 4 L3

Results as of: 8/31/2023

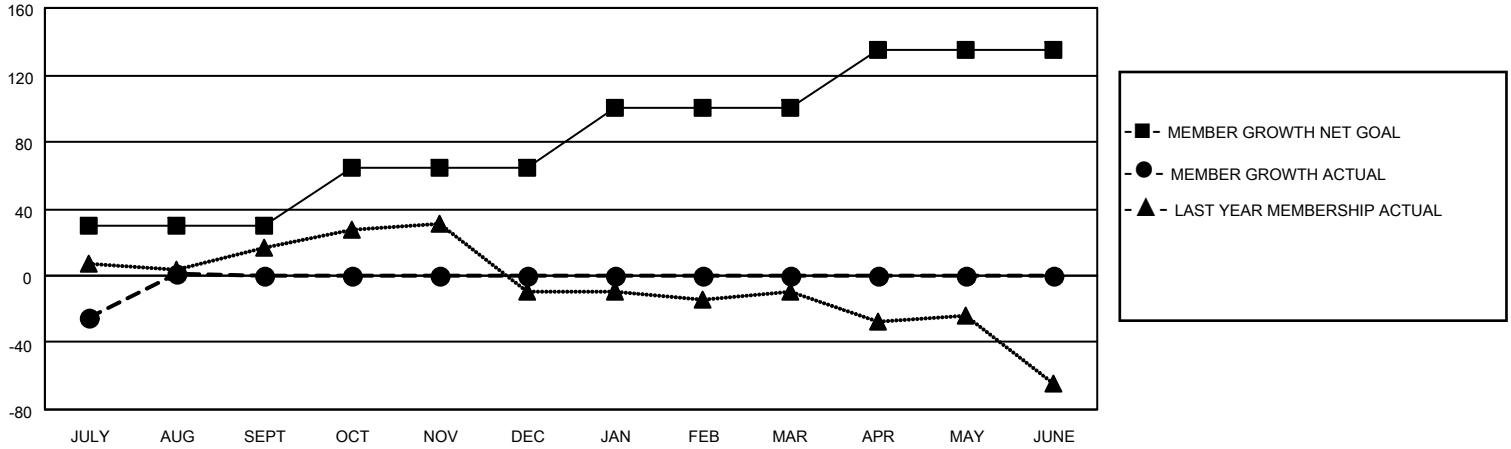
Clubs			
RESULTS FOR 2023-2024			
QUARTER	NEW CLUB GOAL	NEW CLUBS	DROPPED CLUBS
JULY/AUG/SEPT	0	1	1
OCT/NOV/DEC	1	0	0
JAN/FEB/MAR	1	0	0
APR/MAY/JUNE	1	0	0

Members			
RESULTS FOR 2023-2024			
QUARTER	MEMBER GROWTH NET GOAL	MEMBER GROWTH ACTUAL	DROPPED MEMBERS ACTUAL (including transfers)
JULY/AUG/SEPT	30	69	63
OCT/NOV/DEC	35	0	0
JAN/FEB/MAR	35	0	0
APR/MAY/JUNE	35	0	0

GOALS AND ACTUAL NEW CLUBS CUMULATIVE



GOALS AND ACTUAL MEMBERS CUMULATIVE



DROPPED CLUBS: 1	
DROPPED MEMBERS	
DECEASED	3
CLUB CANCELLED	0
OTHER	60
TOTAL	63

13 CLUBS OF 56 ADDED 1 OR MORE NEW MEMBERS

[CLICK HERE FOR CUMULATIVE MEMBERSHIP DATA](#)

<u>GENDER DISTRIBUTION</u>	
MALE	589 (52.45%)
FEMALE	531 (47.28%)
NON BINARY	0 (0.00%)
PREFER NOT TO ANSWER	3 (0.27%)
TOTAL FAMILY UNIT MEMBERS	
	249
FAMILY MEMBERS PAYING HALF DUES	
	134